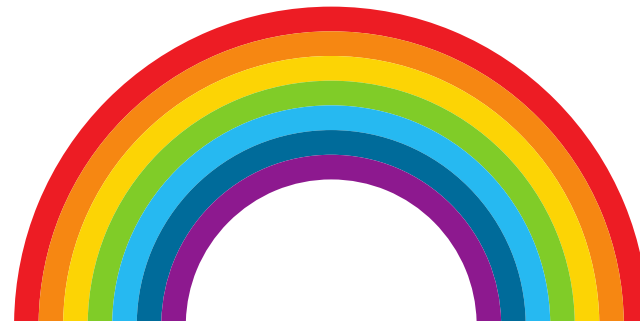
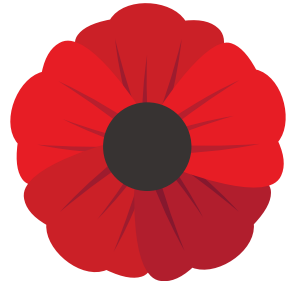
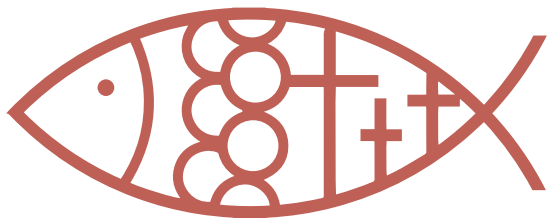
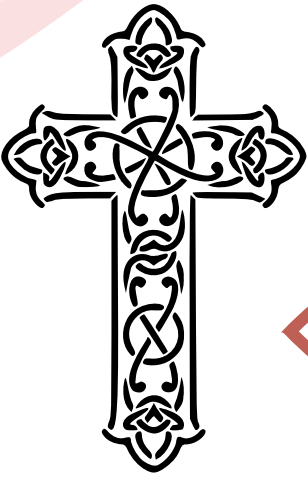


Special Times

Symbols have a special meaning.



People use symbols to express what is special to them...
their religion, beliefs and traditions.

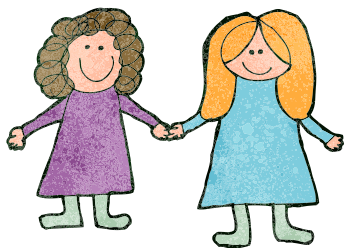
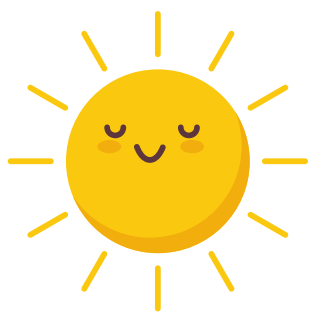
Maybe you can visit a place of worship...online or in your
local area and look for religious symbols and objects.



<http://www.primaryhomeworkhelp.co.uk/Religion.html>

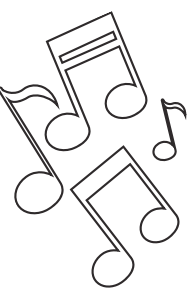


Your school badge represents your school. It
may have symbols e.g. children, path, or tree.



Design your own 'badge'. Think of your
interests and favourite things.

Create some symbols to describe what is
special to you.



CAN YOU THINK
OF SYMBOLS
AND DESIGN A CARD TO
SEND AT SPECIAL TIMES:

Congratulations
Birthday
Baptism
Thinking
Good Luck
Wedding of You



A mandala is a circular design made
from circles, triangles, squares and
diamonds. Search the internet using
the keyword 'mandala'.



<https://www.art-is-fun.com/how-to-draw-a-mandala>